

# FORMAX<sup>®</sup>

## ColorMax8 HIGH-SPEED DIGITAL COLOR PRINTER



powered by  
**memjet<sup>®</sup>**

The ColorMax8 Digital Color Printer combines the latest in inkjet technology with the capacity to produce full-bleed, full-color mailing and packaging solutions. In addition to envelope printing and addressing, the wider, flatter paper path allows users to print on stuffed envelopes, 10" x 13" flats, chipboard, corrugated cardboard, cartons, padded envelopes and more, up to 3/8" thick. All of this is achieved with class-leading low cost per piece and total cost of ownership.

An intuitive 7" color touchscreen provides greater control over the entire print process, displaying image preview, system status and offering access to common functions and settings. Plus, the stored jobs feature holds up to 60 GB of print jobs which can be easily recalled. The enhanced top-loading media feeder has a capacity of up to 575 #10 envelopes, and can feed materials up to 10.5" x 17".

The ColorMax8's Memjet<sup>®</sup> print head has 70,400 ink nozzles and no moving parts, which offers higher speeds, lower ink and maintenance costs and less noise. The ColorMax8 produces full-color CMYK output, up to 16.8 million colors, on a variety of paper stocks and sizes, with full-bleed capability on media up to 8.5" wide. It can print 1600 x 1600 dpi at 6 inches per second, and 1600 x 800 dpi at 12 inches per second.

With its thermal inkjet technology, it doesn't require heat or contact to create an image, so it can safely be used with pre-printed envelopes and windowed envelopes without damaging the window or marring the original image. High-capacity ink tanks and fully-automated print head cleaning ensure optimum print quality throughout print runs. The ColorMax8 also features front access to the ink tanks for quick and easy tank changes.

Optional cmColor RIP Software provides a range of tools to automate production, manage jobs and deliver professional quality color control.

The ColorMax8 joins the ColorMax Digital Printer line and brings a whole new level of colorful capabilities.

## Operating Features

**7" Color Touchscreen:** Intuitive control panel interface with image preview, system status, and access to common functions and settings

**Fast Processing:** Prints up to 8,000 #10 envelopes per hour

**Addressing and Variable Data:** Letterhead, invitations, window/non-window envelopes, invoices, postage, barcodes and more

**Accommodates Media Up to 3/8" Thick:** Wide, flat paper path handles stuffed envelopes, 10x13 flats, chipboard, corrugated cardboard, cartons, padded envelopes, pharmaceutical pill packs, and more

**Electronic Thickness Control:** Set the paper path thickness via the touchscreen control panel

**Top-Loading Feed System:** Holds up to 575 #10 envelopes, and media up to 10.5" x 17"

**Stored Jobs:** Holds up to 60 GB of print jobs, ready to be recalled at any time

**Accurate Feeding:** Pressure roller transport system with star rollers



*Intuitive 7" color touchscreen displays system status, image preview, and provides access to stored jobs*

## Printing Features

**Full-Color High-Resolution Printing:** CMYK output, up to 1600 x 1600 dpi

**Full-Bleed:** Up to 8.5" wide

**High-Capacity Ink Tanks:** Cyan 250ml, Magenta 250ml, Yellow 250ml, Black 500ml

**Easy Ink Access:** Clamshell design provides easy front access to ink tanks

**Up to 16.8 Million Colors**

**Fixed Print Head:** Single 8.77" bar spans the width of the printing surface



*Memjet® print head has 70,400 ink nozzles for higher speeds, lower ink use and less noise than standard print heads*

## Technical Features

**Automated Print Head Maintenance:** Cleaning and capping station automatically maintains print quality

**TruType or Postscript System Fonts**

**USB and Ethernet PC Interface**

**Electronic Firmware Updates via PC Connection**

**Memjet™ Technology:** Innovative print head has no moving parts, features 70,400 color ink nozzles for higher speeds, lower ink costs and less noise than standard print heads



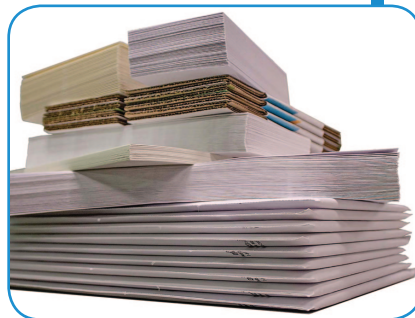
*Clamshell design offers easy front access to ink tanks and paper path*

## Options

**Output Conveyor Stacker:** Keeps printed materials neat for further processing

**Infrared Dryer:** Helps to quickly set ink on glossy stock

**cmColor RIP & Color Match Software:** Provides a range of color management tools



*Wide, flat paper path allows for printing on stuffed envelopes, 10x13 flats, chipboard, cartons, padded envelopes and more*

## Specifications

Print Quality:	Up to 1600 x 1600 dpi @ 6 inches per second, up to 1600 x 800 dpi @ 12 ips	
Speed:	Up to 3,600 per hour 11" sheet Up to 8,000 per hour # 10 envelope (landscape)	
Duty Cycle:	Up to 400,000 prints per month	
Material Size:	Min: 3" W x 4" L    Max: 10.5" W x 17" L	
Material Thickness:	Up to 3/8" (10 mm)	
Print Area:	Up to 8.77" x 40" with full bleed capability under 8.6"	
Ink Tank Capacity:	Cyan 250ml, Magenta 250ml, Yellow 250ml, Black 500ml	
Color Matrix:	Up to 16.8 million colors	
Job Storage:	Up to 60 GB of saved jobs	
Hardware Required:	Windows-based PC, XP and newer	
PC Interface:	USB & Ethernet	
Firmware Update:	Electronic firmware update downloads via PC connection	
Fonts:	All available TruType or Postscript system fonts	
Dimensions:	34" L x 22" W x 21" H                      With conveyor stacker: 81" L x 20" W x 18" H	
Weight:	120 lbs	
Electrical:	110-240VAC 60Hz / 2A	
Certifications:	UL approved, CE declared	

**Formax** - New Hampshire, USA  
www.formax.com

**Local Dealer:**

*Lloyd's of* **Indiana.com**  
Assurance through Experience

**lloydsfindiana.com**  
**877-626-6848**